

Updated KYTC interactive Maps: Free GIS power at your fingertips

The logo features a white rectangular box with a black border, centered over a background of two interlocking gears. The gears are rendered with a teal-to-yellow gradient and a metallic sheen. The text inside the box is as follows:

2024
PARTNERING
CONFERENCE
— **acec-ky** —
kytc • **fhwa**

GIS Support Branch: About Us

- Support customers with all things GIS
- GIS Desktop support / installs
- Design and build custom GIS applications
- Mobile application development
- Support GIS based workflows
- GIS Dashboards and visualizations
- Interactive mapping tools
- KYTC.GIS@ky.gov



2024
PARTNERING
CONFERENCE
— acec-ky —
kytc • fhwa

Maps/Resources



[Active Highway Plan Map](#)

Description: The Active Highway Plan Map provides an interactive map of the approved Six-Year Highway Plan (6YP). These are the major highway improvement projects that are currently active across the Commonwealth of Kentucky.

[Reference](#)



[Bicycle and Pedestrian Facilities](#)

Description: The Bicycle and Pedestrian Facilities map presents the identified pedestrian and bicycling facilities (Bike lanes, sidewalks, crosswalks, etc.) on all new or reconstructed state maintained roadways in existing and planned urban and suburban areas across the Commonwealth of Kentucky.



[Bike Routes](#)

Description: The Bike Routes resource page highlights all AASHTO approved or identified bicycle corridors across the Commonwealth of Kentucky.



[Bridge Data Miner](#)

Description: The Bridge Data Miner presents an interactive map of all bridges and inspections that the Kentucky Transportation Cabinet has conducted on more than 14,000 bridges across the Commonwealth of Kentucky.

[Reference](#)



[Emergency Funding Routes \(FEMA\FHWA\ER\)](#)

Description: The Emergency Funding Routes map highlights public roads designated as eligible for reimbursement for through the FHWA Emergency Relief Program which helps states defray maintenance costs associated with recognized emergencies.



[Environmental Overview](#)

Description: The Environmental Overview map highlights environmental resources of significance, potential jurisdictional features, and other environmental areas of concern within Kentucky that should be considered during project development and maintenance work.



[Functional Class Map](#)

Description: The Functional Classification map allows customers to understand how the different roadway segments make up an interdependent hierarchical network of arterial, collector, and local roads for efficiently moving traffic through the system. It also helps planners and engineers increase travel efficiency and cost effectiveness as they design, build, and maintain these roads.



[General Highway Map](#)

Description: The General Highway Map displays all interstates, parkways, U.S highways, state roads, and local roads within the Commonwealth of Kentucky.

[Order button.jpg](#)



[KYCORS](#)

Description: The KYCORS interactive map displays all National Geodetic Survey (NGS) and KY Network only CORS (Continuously Operating Reference Station) locations that are current, pending, or under construction within Kentucky and adjacent areas of the surrounding states.



What all can I do in these maps?

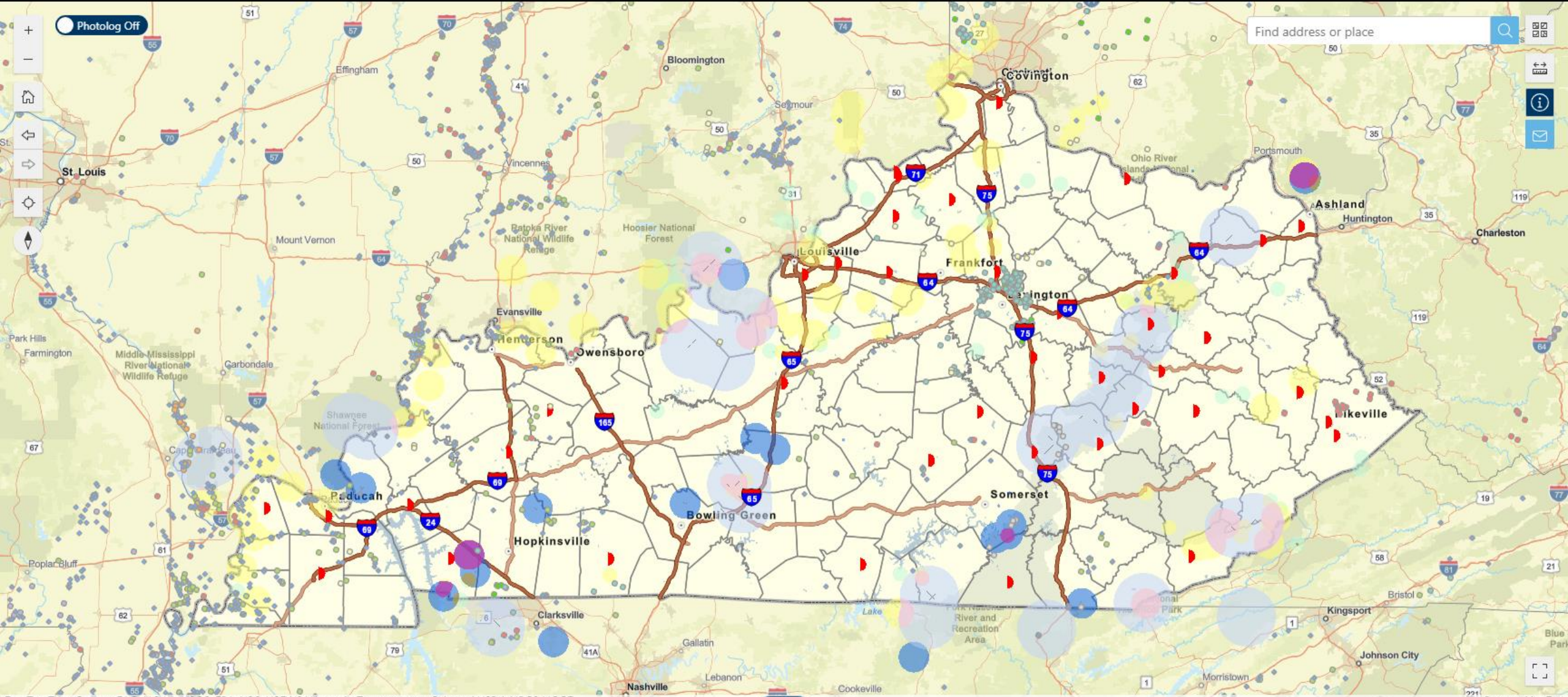
- View Routes and Milepoint
- Drive the roadway through time (photolog)
- View coordinates in multiple projections
- Elevation data
- Add your own data
- Measure (linear, area)
- Print paper maps
- Markup
- Reverse address lookup
- Google street view
- Collaborate with others

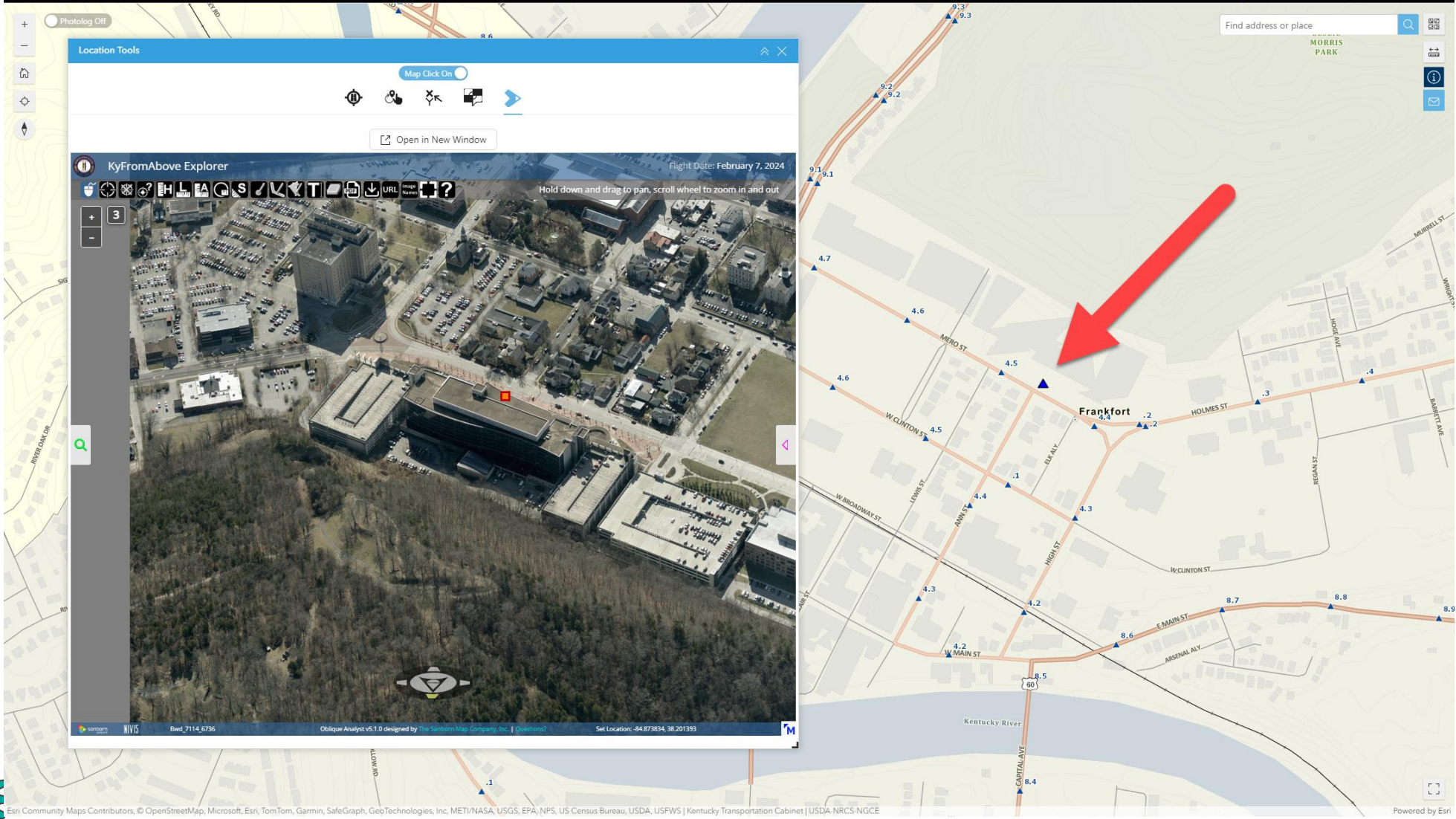
New Features Coming with Update

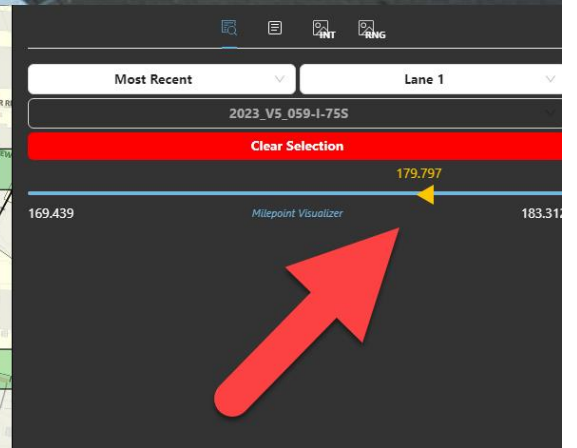
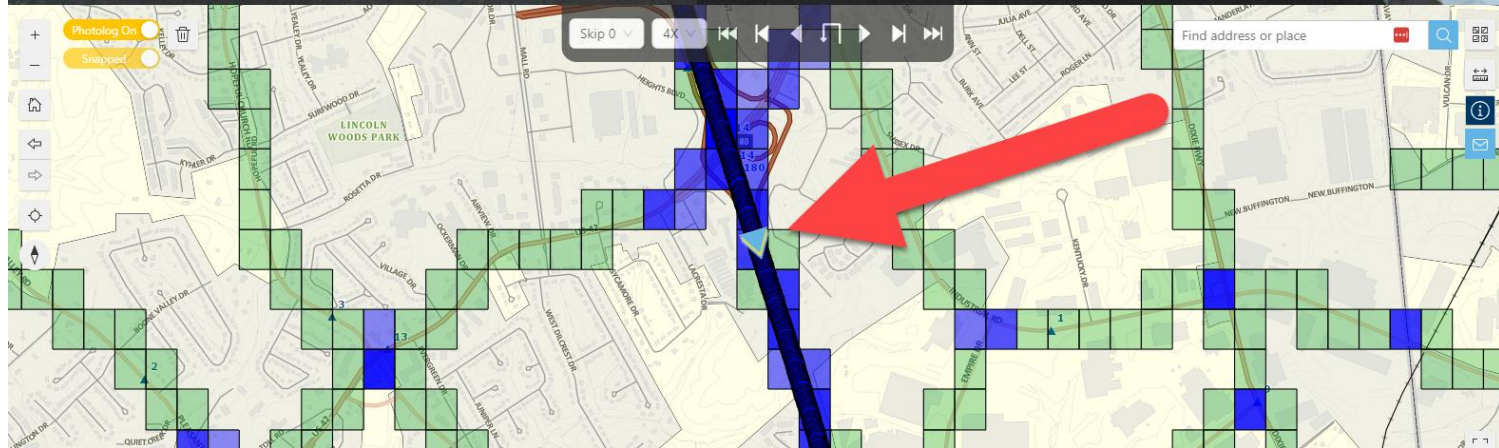
- Oblique Imagery Viewer
- Mobile view optimization (Tablet / Phone)
- Additional curated data selections
- Customizable road info attributes
- Milepoint Visualizer
- Resize photolog images
- Updated KYTC branding
- Many other improvements



2024
PARTNERING
CONFERENCE
— acec-ky —
kytc • fhwa







DEMO

A decorative graphic on the left side of the slide. It features a white rectangular box with a thin black border, centered over two interlocking gears. The gears are rendered with a teal-to-yellow gradient. The background behind the gears consists of diagonal stripes in the same color gradient. The text inside the box is as follows:

2024
PARTNERING
CONFERENCE
— **acec-ky** —
kytc • **fhwa**

What do I need to do?

- URL's will remain the same as existing maps
- Updates will be performed after hours
- Data used within maps are not changing



2024
PARTNERING
CONFERENCE
— acec-ky —
kytc • fhwa

Webinar: Interactive Maps - Updates and Improvements Webinar

- Postmaster with registration link – 9/10
- KYTC internal webinar – 9/17 - 11:30AM
- YouTube video on maps and resources for internal and external use



2024
PARTNERING
CONFERENCE
— acec-ky —
kytc * fhwa

<https://test-maps.kytc.ky.gov/Testing/>

2024
PARTNERING
CONFERENCE
— accec-ky —
kytc • fhwa



Scan me!



Updated KYTC Interactive Maps: Free GIS power at your fingertips 10:00am



Updated KYTC Interactive Maps: Free GIS power at your fingertips 3:00pm